

MELTON HIGHWAY, SYDENHAM

Pedestrian access changes

20 APRIL 2017 – MID 2018

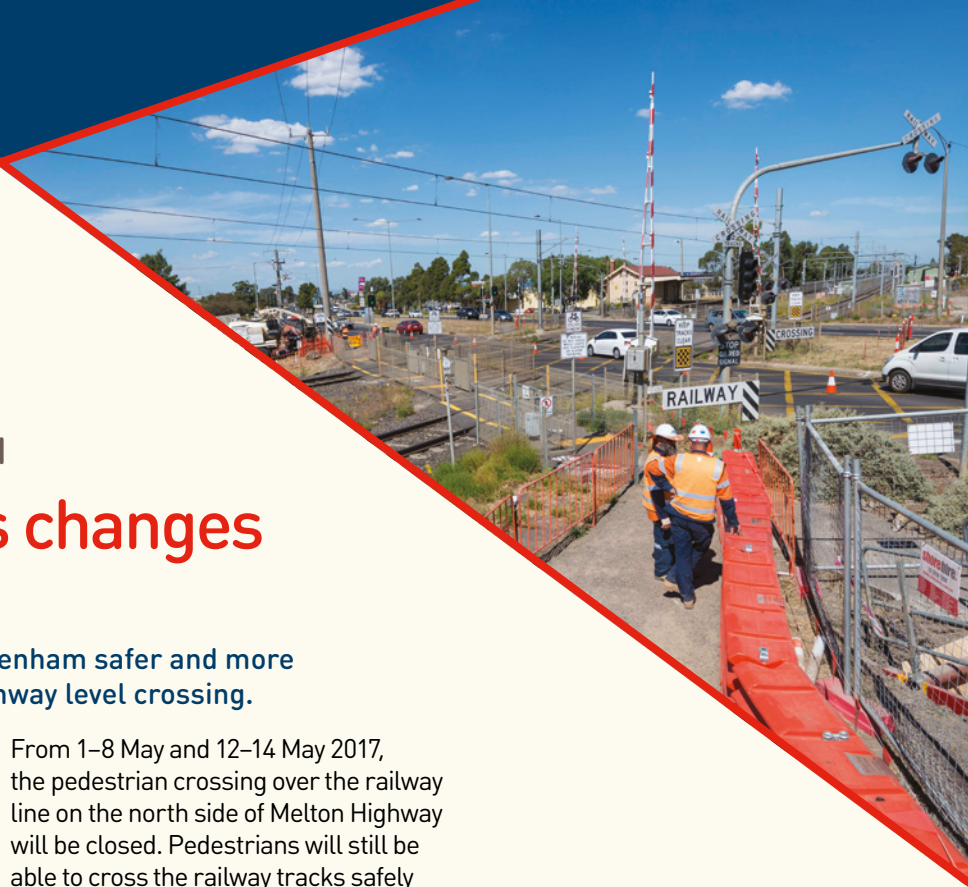
We are doing major works to make Sydenham safer and more connected by removing the Melton Highway level crossing.

To allow for construction, some pedestrian crossings will be closed at Melton Highway from Thursday 20 April.

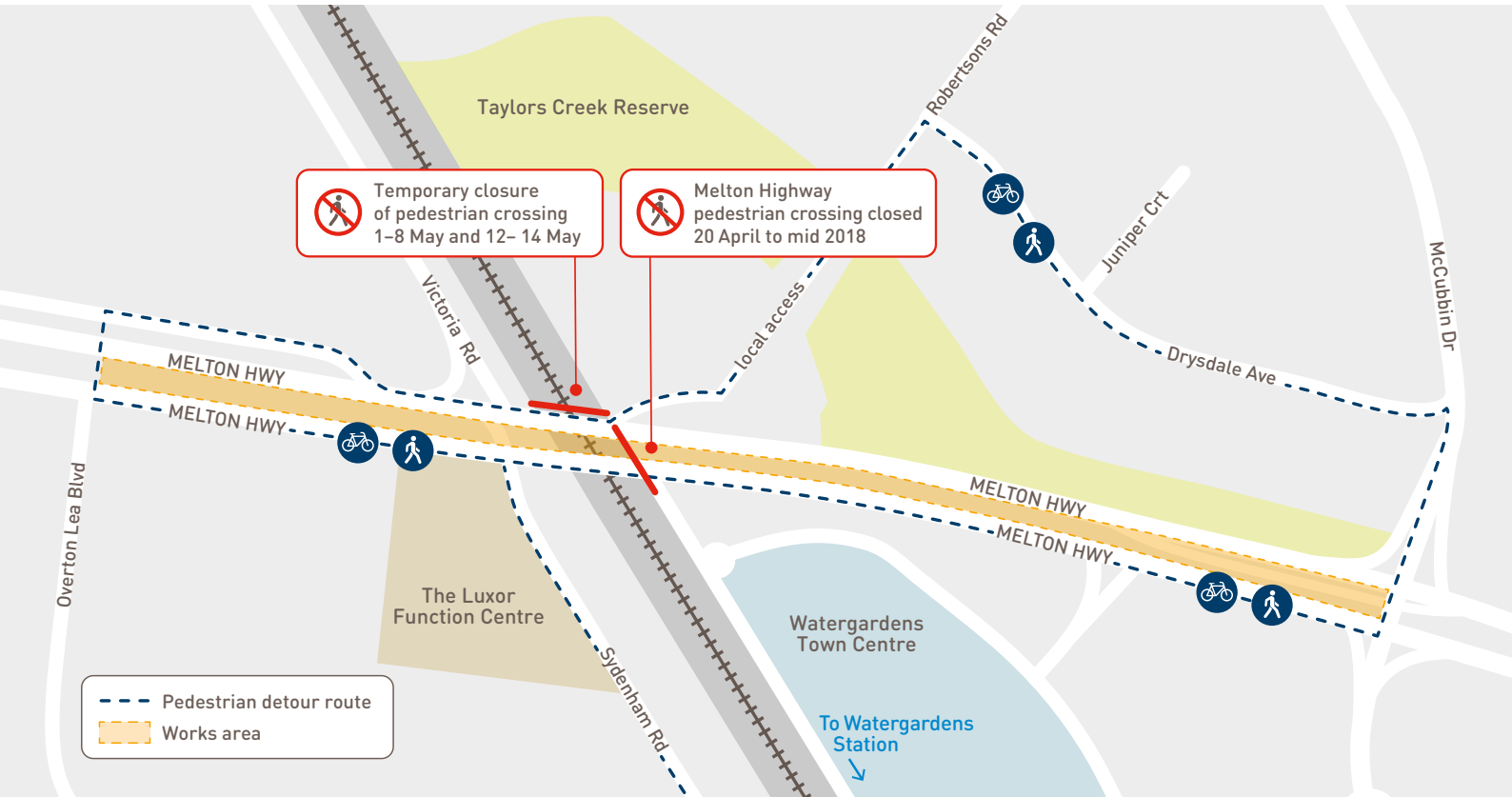
During construction until mid-2018, the crossing from the Old Sydenham Station across Melton Highway near the railway line will be closed. Pedestrian detours will be in place.

From 1–8 May and 12–14 May 2017, the pedestrian crossing over the railway line on the north side of Melton Highway will be closed. Pedestrians will still be able to cross the railway tracks safely on the south side.

For more information about these planned disruptions please visit: levelcrossings.vic.gov.au/crossings/melton-highway



Changes to pedestrian access for Melton Highway



@ contact@levelcrossings.vic.gov.au
1800 762 667
levelcrossings.vic.gov.au



Translation service – For languages other than English, please call 9280 0780.

Please contact us if you would like this information in an accessible format.

Follow us on social media
@levelcrossings

